

# sunpura

## Plug-In Home Battery

- All-in-One Stackable Design - Integrates MPPT, battery, BMS, and EMS for powerful functionality
- Quick plug-and-play setup for instant energy independence
- Ecosystem integrated with smart meters and smart home devices
- AI-driven energy management for higher efficiency and ROI

### 2400W

Max. charging and discharging power

### 4400Wp

Max PV Input (PV +Miro INV)  
\*The AC version does not support photovoltaic (PV) input.

### 10 Years

Warranty

### 6000

Cycles

• S4800 •

• S4800 AC •



### sunpura Ecosystem



sunpura



### Supports Dynamic Tariffs

# 700+

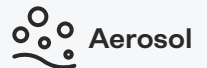
European Power Suppliers

### sunpura HOME AI

- AI-driven HEMS
- Personalized control
- Secure and reliable (GDPR compliant)



### Reliable and Safe Guarding



### Power Grows With Your Needs

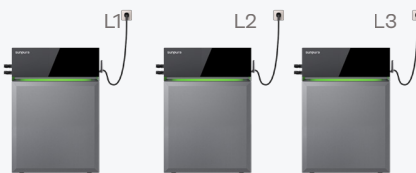
#### 4.8kWh

Up to 14.4 kWh



### Parallel Expansion

Max - 7.2kW / 43.2kWh



### Scenario



Balcony



Garden



Outdoors



Roof

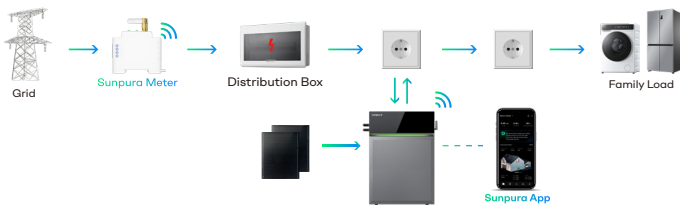
# Technical Parameters



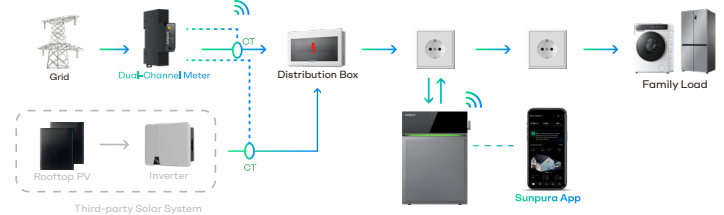
## MODEL S4800 / S4800 AC

PV TERMINAL	
Max Input Voltage	100V / -
Max Input Current	16A x 2 / -
Max Input Power	1000Wp x 2 / -
Operation Voltage Range	10-100V / -
BATTERY DATA	
Rechargeable Li-ion Battery	LiFePO <sub>4</sub>
Battery Nominal Voltage	48V
Max Charging / Discharging Current	50A
Rated Power (Single Device)	2400W
Cycles	6000 cycles 70%SOH (0.5C)
Battery Depth of Discharge (DOD)	90%
Rated Energy	4800Wh      9600Wh      14400Wh
AC INPUT (ON-GRID TERMINAL)	
Max AC Input Power	2400W
Max AC Input Current	11A
AC Nominal Input Voltage	L + N + PE, 220VAC / 230VAC, 50Hz
AC OUTPUT (ON-GRID TERMINAL)	
Rated AC Output Power	800W
Rated AC Output Current	3.5A
Max AC Output Power	2400W
Max AC Output Current	10.9A
AC Nominal Output Voltage	L + N + PE, 220VAC / 230VAC, 50Hz
AC OUTPUT (OFF-GRID TERMINAL)	
Max AC Output Power	2400W
Max AC Output Current	10.9A
Max AC Input Power (AC Coupled)	2400W
Max AC Bypass Output Power	2400W
Peak Output power (5s)	3600W
AC Nominal Output Voltage	L + N + PE, 220VAC / 230VAC, 50Hz
GENERAL DATA	
Protective Class	Class I
Operating Temperature Range	-20°C to 55°C
Ingress Protection	IP65
Net Weight	A2400 / A2400AC (Power Box) : 14.3kg / 14kg B4800*1: 47.85kg      B4800*2: 95.7kg      B4800*3: 143.55kg
Dimensions (WxHxD)	450x645x285mm (Height: A2400 / A2400 AC: 170mm) (Height: B4800*1: 475mm)      (Height: B4800*2: 950mm)      (Height: B4800*3: 1425mm)
Overvoltage / Overcurrent / Short Circuit / Temperature Protection	Integrated
Communication Method	WIFI / Bluetooth
Warranty	10 Years
Certificates	CE/EMC, RED, LVD, CB, ROHS, REACH, UN38.3, MSDS, Transportation of Goods, IP65, WEEE, VDE4105, EN50549, CEI 0-21, VDE0126, OVE R25, C10/11

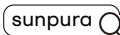
### PLUG & PLAY All-In-One



### PLUG & PLAY AC-Coupled



\*Sunpura reserves the right to final interpretation. \_202606\_V1\_EN



www.sunpuraenergy.com

**sunpura**

TEL: +86 755 27210648    Email: info@sunpuraenergy.com

Add: 4F, Tower A, Building 1, Phase 2, Gaoxinqi Industrial Park, Bao'an District, Shenzhen, China

**European HQ**

TEL: +49 (0) 15170691704

Add: Rungedamm 37, 21035 Hamburg, Germany